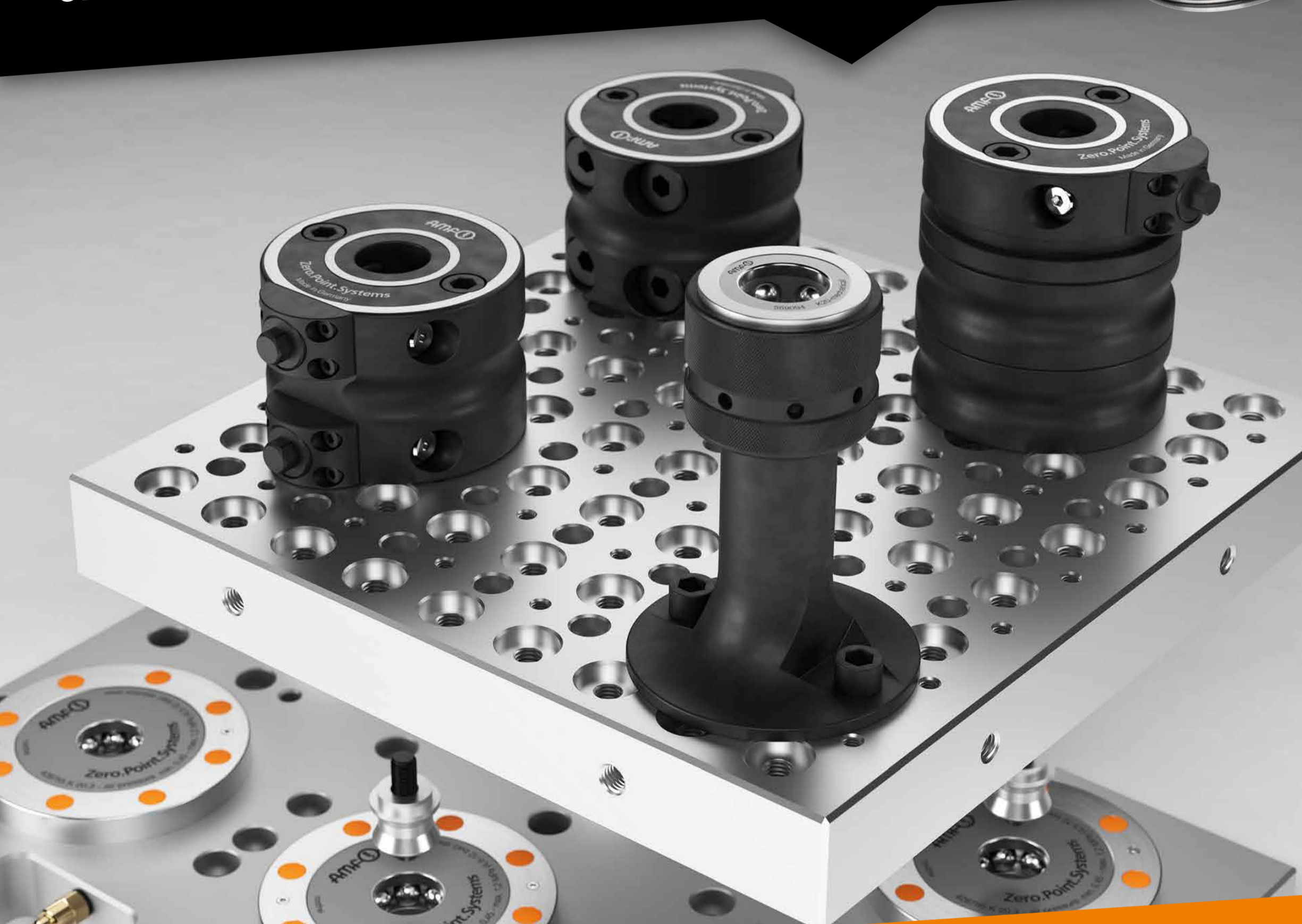


HOME OF  
CLAMPING



MORE EXCITEMENT FROM AMF!

**SPECTACULAR PRICES FOR 2024**  
CLAMPING TECHNOLOGY FROM THE MARKET LEADER



AMF "ZERO-POINT" CLAMPING SYSTEMS

AMF VACUUM CLAMPING SYSTEMS

AMF MAGNETIC CLAMPING SYSTEMS

AMF MULTIPLE CLAMPING SYSTEMS

SMART AUTOMATION FROM AMF

AMF GRIPPER

# PRODUCTS FOR TENSION-FREE PRODUCTION PROCESSES.

STATE-OF-THE-ART TECHNOLOGIES, EXPERT ADVICE.

The aspiration to constantly improve is what drives us to further develop our product range. This innovative spirit is always the underlying motivation when our engineers and designers grapple sometimes with just minor alterations to our quality products and various key services and thereby open up new opportunities for our customers. Competence, experience and know-how are core requirements here.

This also includes, however, the passionate guiding principle to further increase the efficiency of your automation process with innovative products from clamping technology.

## OPTIMIZED PROCESSES THROUGH INNOVATIVE CLAMPING TECHNOLOGY

As varied as the demands may be, as versatile is our extensive product range for all areas of clamping technology.

All products impress with the highest quality standards, and with their respective focal points, they solve even the most challenging tasks in practice. After all, in everyday life the main aim is to ensure economic processes with clamping technology solutions.



### „ZERO-POINT“ CLAMPING SYSTEM

The AMF „ZERO-POINT-SYSTEM“ with its innovative technology ensures perfect clamping. The highly precise clamping modules have high draw-in, locking and holding forces and are suited for the widest range of applications. Progress that pays off!



### HYDRAULIC CLAMPING TECHNOLOGY

The principle of hydraulic clamping technology and its consistent further development is the basis for an extensive product range that convinces with quality and inspires with versatility. Practical day-to-day needs and solutions to them are the benchmark and driving force here.



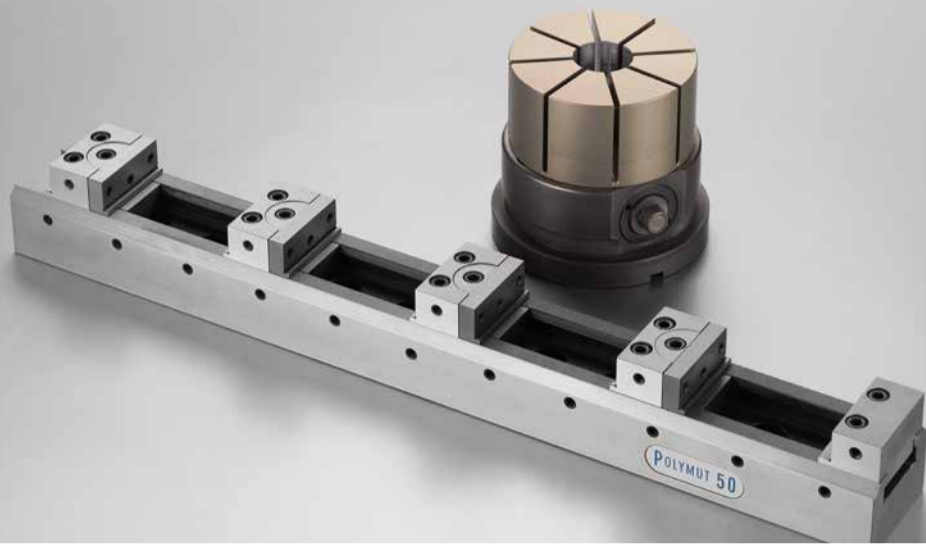
### VACUUM CLAMPING SYSTEMS

Each workpiece is fastened to the clamping plate by a vacuum so that it can be machined from all sides without any damage. Flexible vacuum systems contribute towards the increase of economic efficiency and productivity especially in the timber, plastic and NE metal industries.



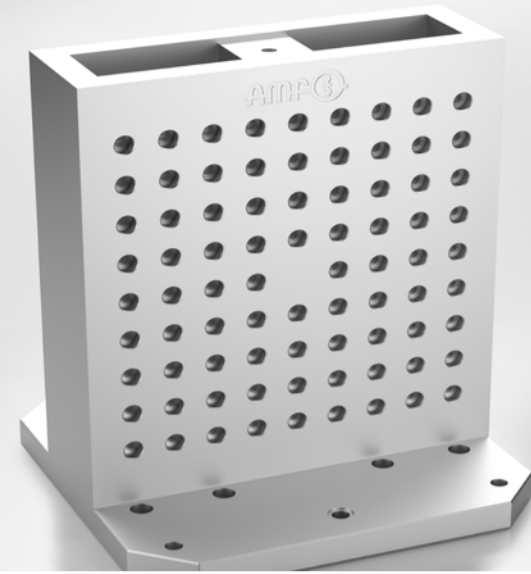
### MAGNETIC CLAMPING SYSTEMS

The force of the magnetic field serves as the basis of this innovative technology, which clamps the workpiece reliably for machining on 5 sides. Surface quality and higher precision are the results of this unique combination of performance, safety and efficiency.



### SINGLE UND MULTIPLE CLAMPING SYSTEMS

Ideal for smaller components. Precision vices and clamps for reliable clamping – even of complex external contours. The multiple clamping systems also achieve enormous time savings, which also permit clamping of multiple and different workpieces at the same time.



### MODULAR FIXTURE SYSTEMS

The principle is as clear as it is convincing: Pallets, angles and cubes with grid holes as base elements as well as assembly, positioning and clamping elements in two standardised sizes (M12, M16) are the components of the fixture systems from AMF.



### TOGGLE CLAMP, MANUAL & PNEUMATIC

Whether manual or pneumatic – the versatile AMF toggle clamps are fully functional even after years of use and achieve long-term results in terms of rationalisation. Apart from favourable force and motion ratios, the entire product range offers easy handling in daily use.



### MARKING TOOLS & CLEANING TOOLS

The high economic efficiency products stems from the low procurement costs and long service life. The AMF markers ensure a high-quality, durable written type face without corrosion of the workpiece, and with the Cleaner products, the machine practically cleans itself.



### WIRELESS SENSING SYSTEMS

The AMF wireless sensing system enables wireless and flexible sensor querying within the production environment. Transmitter units transmit the states detected by sensors wirelessly. As the receiver, the gateway handles the communication between the sensor and the machine control.



### GRIPPERS

With the grippers from AMF your machine tool turns night into day. For as soon as the workpieces have been set up once, the tool works around the clock. It does not matter how many different workpiece are involved here.



Until now € 3.942,-  
**NOW ONLY € 2.949,-**



#### 4-WAY CLAMPING STATION

Zero-point clamping station for setup-time-optimised clamping on machine tables with groove spacing of 63, 100 and 125 mm\*. Pitch spacing 200 mm.

Size KH10.2, hydraulic – holding force 4 x 25 kN

**ORDER NO. 559082 - ONLY € 2.949,-**

Size KP10.3, pneumatic – holding force 4 x 25 kN

**ORDER NO. 556118 - ONLY € 3.230,-**

Size KH20\*, hydraulic – holding force 4 x 55 kN

**ORDER NO. 561218 - ONLY € 3.725,-**

Size KP20.3, pneumatic – holding force 4 x 55 kN

**ORDER NO. 556119 - ONLY € 4.630,-**

\* Order no. 561218: Customer must make the hole pattern to fit the machine table.

Until now € 5.583,-  
**NOW ONLY € 4.225,-**



#### 6-WAY CLAMPING STATION

Zero-point clamping station for setup-time-optimised clamping on machine tables with groove spacing of 63, 100 and 125 mm\*. Pitch spacing 200 mm.

Size KH10.2, hydraulic – holding force 6 x 25 kN

**ORDER NO. 559083 - ONLY € 4.225,-**

Size KP10.3, pneumatic – holding force 6 x 25 kN

**ORDER NO. 556122 - ONLY € 4.845,-**

Size KH20\*, hydraulic – holding force 6 x 55 kN

**ORDER NO. 561219 - ONLY € 5.419,-**

Size KP20.3, pneumatic – holding force 6 x 55 kN

**ORDER NO. 556123 - ONLY € 6.305,-**

\* Order no. 561219: Customer must make the hole pattern to fit the machine table.

INCLUDING **FREE** ACCESSORIES!



Illustration similar.  
 Composition of accessories depending  
 on design of the clamping station.

#### WITH SIZE KH10.2

1 x quick-release coupling

#### WITH SIZE KP10.3

1 x pneumatic hose,  
 1 x quick-release coupling and fittings

#### WITH SIZE KH20

1 x quick-release coupling

#### WITH SIZE KP20.3

1 x pneumatic hose,  
 1 x quick-release coupling and fittings

Until now € 1.090,-  
**NOW ONLY € 609,-**



### **PRESSURE INTENSIFIER**

Compact, air-pressure-operated pressure intensifier for single-acting hydraulic circuits. The pressure intensifier is used for opening the hydraulic clamping stations.

**ORDER NO. 559084 - ONLY € 609,-**

Until now € 215,-  
**NOW ONLY € 124,-**



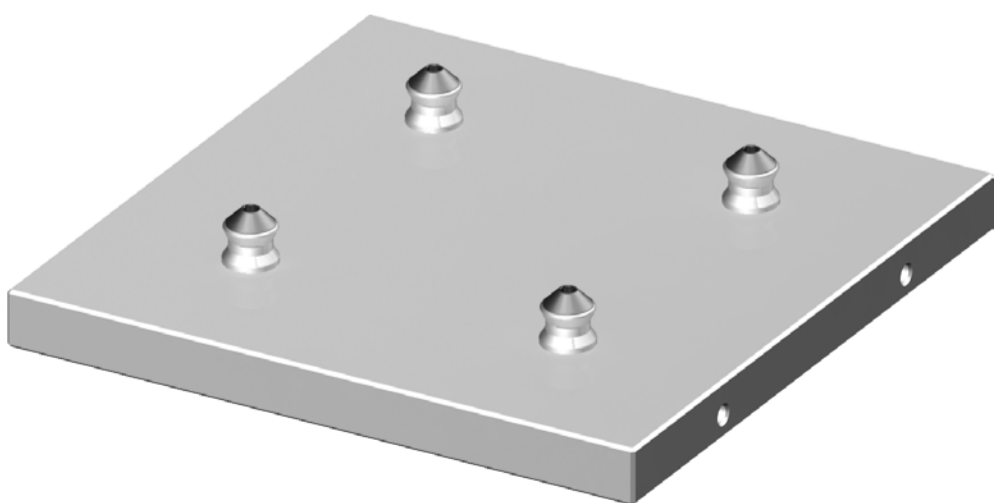
### **HYDRAULIC CONNECTION KIT**

Consisting of:

- 1 x hydraulic connecting tube, 1 x pressure gauge,
- 2 x straight pipe connections and screw-in flanges,
- 1 x T-bolt fitting and screw-on fitting,
- 2 x quick-release coupling sleeves and plugs,
- 2 x Cu sealing ring

**ORDER NO. 559085 - ONLY € 124,-**

Until now € 810,-  
**NOW ONLY € 339,-**



### **INTERCHANGEABLE PALLET**

made of high-strength aluminium.

Suitable for 4-way clamping station KH10.2 / KP10.3

**ORDER NO. 556120 - ONLY € 339,-**

Suitable for 4-way clamping station KH20 / KP20.3

**ORDER NO. 556121 - ONLY € 535,-**

Suitable for 6-way clamping station KH10.2 / KP10.3

**ORDER NO. 556124 - ONLY € 719,-**

Suitable for 6-way clamping station KH20 / KP20.3

**ORDER NO. 556125 - ONLY € 799,-**



Until now € 529,-  
**NOW ONLY € 329,-**



**CLAMPING MODULE, MECHANICAL**

Mechanical zero-point clamping system for set-up-time-optimised clamping. Particularly suitable for the modular design of clamping solutions.

Size BM10, mechanical – Retaining force 25 kN  
**ORDER NO. 563386 – ONLY € 329,-**

Size BM20, mechanical – Retaining force 55 kN  
**ORDER NO. 563387 – ONLY € 419,-**

Until now € 884,-  
**NOW ONLY € 549,-**



**DOUBLE CLAMPING MODULE, MECHANICAL**

Mechanical zero-point clamping system for set-up-time-optimised clamping. Particularly suitable for the modular design of clamping solutions.

Size BM10, mechanical – Retaining force 25 kN  
**ORDER NO. 563388 – ONLY € 549,-**

Size BM20, mechanical – Retaining force 55 kN  
**ORDER NO. 563389 – ONLY € 661,-**

Until now € 237,-  
**NOW ONLY € 159,-**



**CLAMPING MODULE, MECHANICAL**

Mechanical zero-point clamping system for set-up-time-optimised clamping. Particularly suitable for the modular design of clamping solutions.

Size BM10, mechanical – Retaining force 17 kN  
**ORDER NO. 563390 – ONLY € 159,-**

Size BM20, mechanical – Retaining force 43 kN  
**ORDER NO. 563391 – ONLY € 222,-**



**SUPPORT ELEMENT, FIXED**

Simple, quick and flexible clamping of complex workpiece contours on the machine table.

Size B10  
**ORDER NO. 563392 – ONLY € 250,-**

Size B20  
**ORDER NO. 563393 – ONLY € 276,-**

Until now € 403,-  
**NOW ONLY € 250,-**

Until now € 495,-  
**NOW ONLY € 419,-**



### COMPLETE SET OF SPACER ELEMENTS

The spacer elements are used as height adapters for workpieces and clamping fixtures, and are mounted to the main elements.

Size B10 - 1 x height 28 mm, 3 x height 40 mm

**ORDER NO. 563394 - ONLY € 419,-**

Size B20 - 4 x height 40 mm

**ORDER NO. 563395 - ONLY € 429,-**

Until now € 4.632,-  
**NOW ONLY € 2.876,-**



### COMPLETE SET MODULAR ZERO-POINT CLAMPING SYSTEM

Consisting of:

4 x clamping module, mechanical

4 x spacer element, height 100 mm

4 x base element, flat for T-slot plate

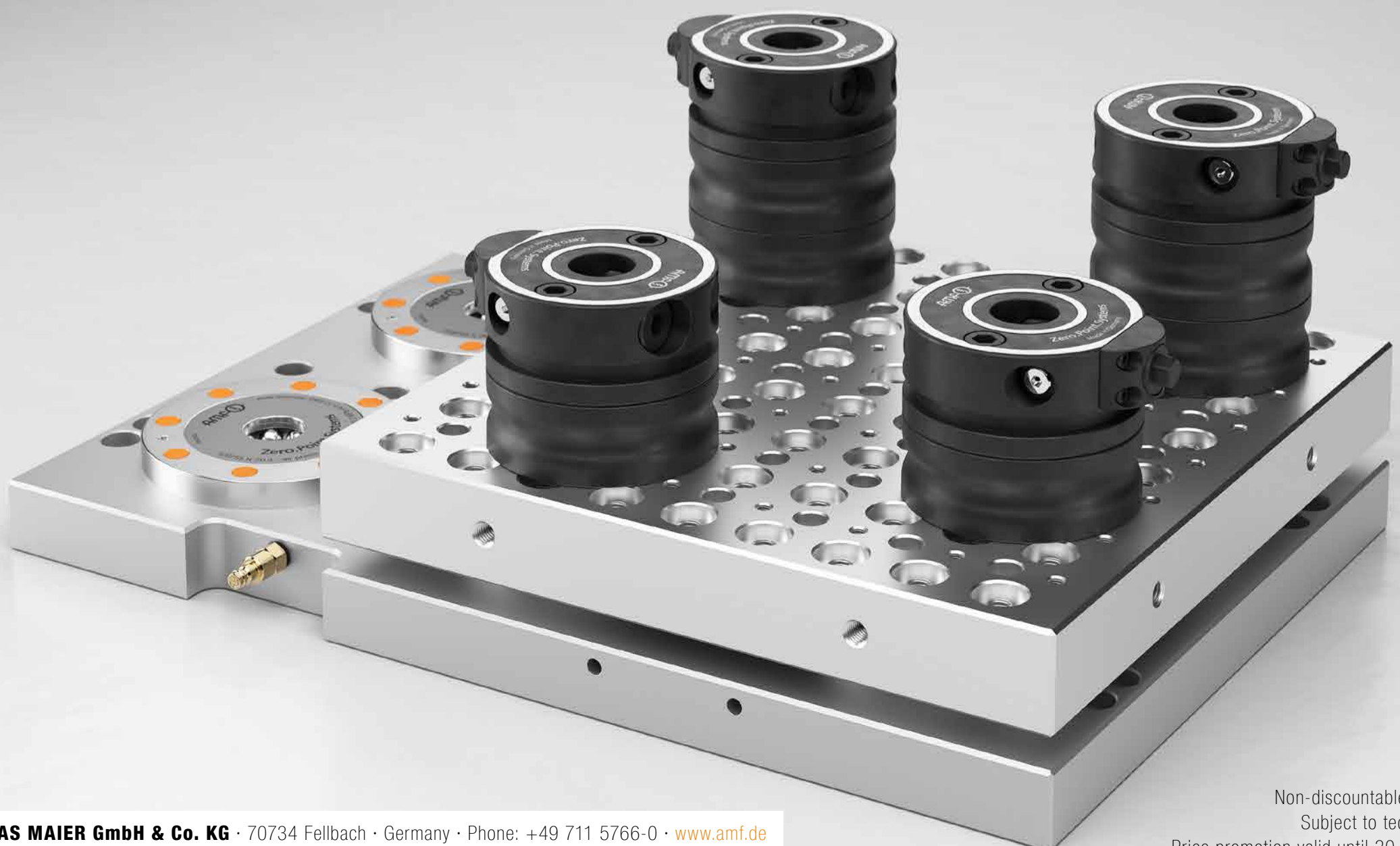
8 x centring sleeve

Size B10

**ORDER NO. 570891 - ONLY € 2.876,-**

Size B20

**ORDER NO. 570892 - ONLY € 3.394,-**



Until now € 231,-  
**NOW ONLY € 170,50**



### PULL-STUD SET

4x zero point pull-studs size 10, 4x engagement screws M8

**ORDER NO. 569216 - ONLY € 170,50**

4x sword pull-studs size 10, 4x engagement screws M8

**ORDER NO. 569239 - ONLY € 170,50**

4x undersized pull-studs size 10, 4x engagement screws M8

**ORDER NO. 569240 - ONLY € 170,50**

4x zero point pull-studs size 20, 4x engagement screws M12

**ORDER NO. 569241 - ONLY € 285,50**

4x sword pull-studs size 20, 4x engagement screws M12

**ORDER NO. 569242 - ONLY € 285,50**

4x undersized pull-studs size 20, 4x engagement screws M12

**ORDER NO. 569243 - ONLY € 285,50**

### CHAIN CLAMPING SET

For the clamping of mainly cylindrical parts such as valve bodies, flanges, pump housings, pistons, etc. Can be used on machine tables as well as on clamping pallets.

For slot 14, 16, 18

**ORDER NO. 566124 - ONLY € 433,-**

For slot 18, 20, 22, 24

**ORDER NO. 566125 - ONLY € 593,-**

Until now € 469,-  
**NOW ONLY € 291,-**



### ADAPTER SET FOR PULL-STUDS SIZE 10

for reducing the mounting bore from pull-stud size 20 to size 10.

6 x size 20-10

**ORDER NO. 570893 - ONLY € 291,-**

Until now € 69,-  
**NOW ONLY € 43,-**



Illustration similar.

### CENTRING SLEEVE

For size 10: 6x Ø15 mm

**ORDER NO. 563397**

**ONLY € 43,-**

For size 20:

5x Ø16 mm, 1x Ø16 to Ø25 mm

**ORDER NO. 563399**

**ONLY € 50,-**

Until now € 765,-  
**NOW ONLY € 433,-**





Until now € 2.136,-  
**NOW ONLY € 1.425,-**



#### **MULTIPLE CLAMPING SYSTEM**

Clamping rail including clamping jaws and wedge clamps!  
 Existing mounting holes for pull-studs of the AMF "Zero-Point" clamping system.

Size 400 x 80 mm - for 2 workpieces

**ORDER NO. 556116 - ONLY € 1.425,-**

Size 600 x 80 mm - for 4 workpieces

**ORDER NO. 556117 - ONLY € 2.305,-**

Until now € 2.495,-  
**NOW ONLY € 1.295,-**



#### **MULTIPLE-CLAMPING SYSTEM "EASY VISE"**

Versatile multiple clamping system is designed for use on four- and five-axis milling machines. Clamping and machining of 2 or 4 workpieces simultaneously.

Jaw width 28 mm

**ORDER NO. 570836 - ONLY € 1.295,-**

Jaw width 48 mm

**ORDER NO. 570837 - ONLY € 1.305,-**

#### **ADAPTER FOR MULTIPLE CLAMPING SYSTEM "EASY VISE"**

For mounting the multiple clamping system EASY VISE.  
 Fastening on the machine table using T-slots or the AMF zero-point clamping system size 10 or size 20.

**ORDER NO. 570838 - ONLY € 235,-**

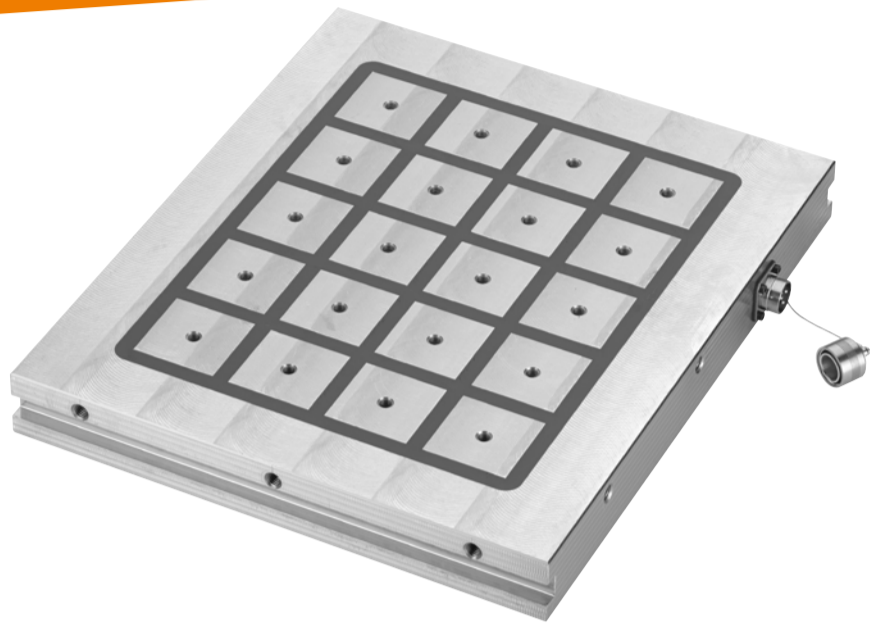
Until now € 429,-  
**NOW ONLY € 235,-**





Until now € 4.860,-

**NOW ONLY € 2.870,-**



### MAGNETIC CLAMPING PLATE FOR MILLING

Square pole technology in monoblock design.  
For positioning, clamping and machining of magnetizable materials.

Size 390 x 330 mm – Retaining force 8 tons

**ORDER NO. 553197 - ONLY € 2.870,-**

Size 580 x 390 mm – Retaining force 16 tons

**ORDER NO. 553198 - ONLY € 3.937,-**

Size 780 x 390 mm – Retaining force 20 tons

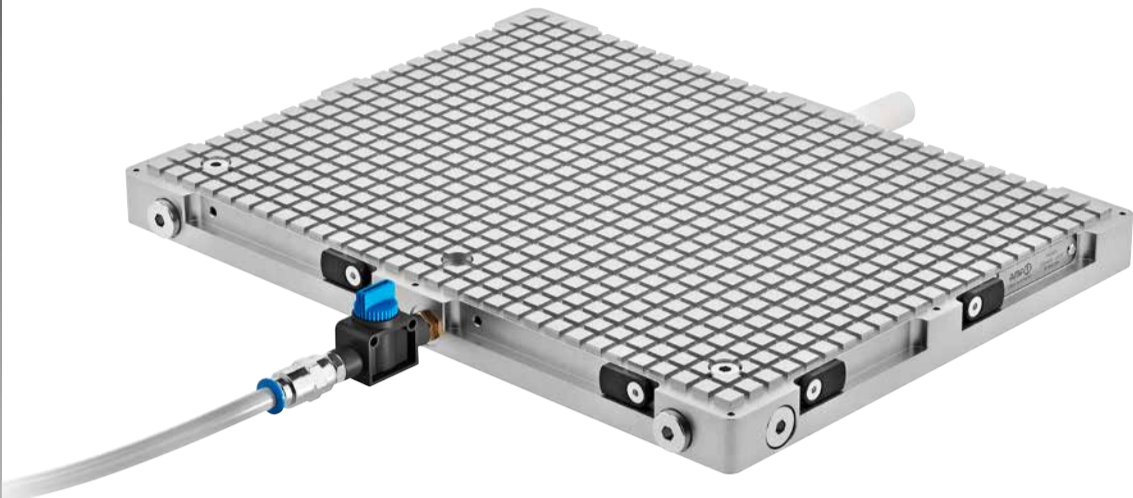
**ORDER NO. 553199 - ONLY € 4.936,-**



INCLUDING CONTROL UNIT,  
HAND-HELD CONTROLLER AS  
WELL AS POLE EXTENSION SET!  
**FREE!**



Until now € 1.510,-  
**NOW ONLY € 705,-**



### VACUUM CLAMPING PLATE, BASIC LINE

The AMF vacuum clamping plate can be operated using compressed air in combination with integrated Venturi nozzle, as well as with an external vacuum pump.

Size 290 x 390 mm

**ORDER NO. 570886 - ONLY € 705,-**

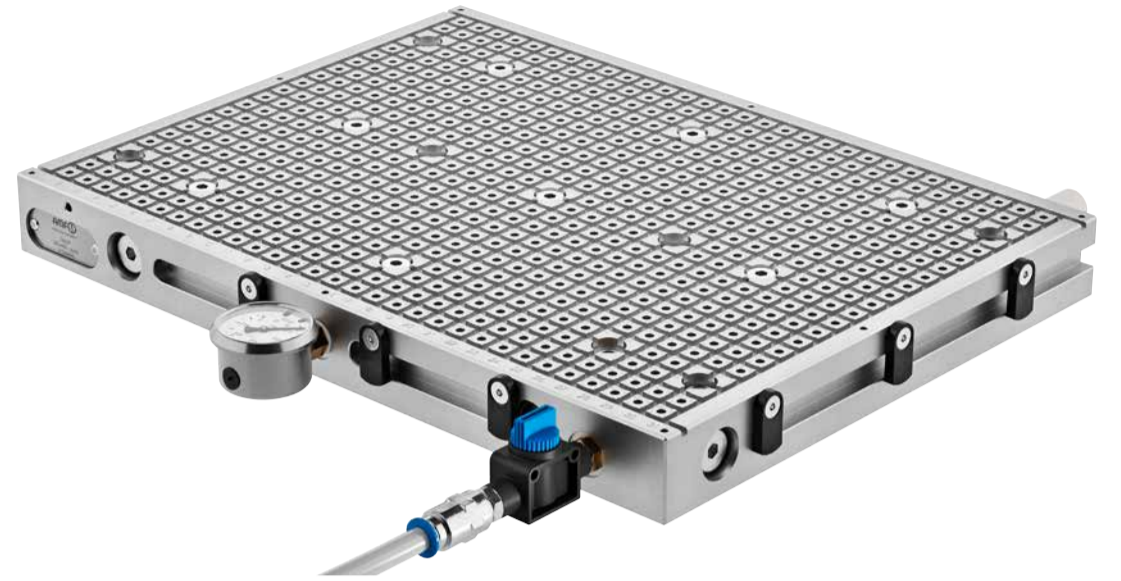
Size 390 x 390 mm

**ORDER NO. 570887 - ONLY € 845,-**

Size 390 x 590 mm

**ORDER NO. 570888 - ONLY € 1.095,-**

Until now € 1670,-  
**NOW ONLY € 779,-**



### VACUUM CLAMPING PLATE, PREMIUM LINE

The AMF vacuum clamping plate can be operated using compressed air in combination with the integrated Venturi nozzle, as well as with an external vacuum pump.

Size 300 x 200 mm

**ORDER NO. 570828 - ONLY € 779,-**

Size 300 x 400 mm

**ORDER NO. 570829 - ONLY € 1.040,-**

Size 400 x 400 mm

**ORDER NO. 570830 - ONLY € 1.379,-**

Size 400 x 600 mm

**ORDER NO. 570831 - ONLY € 1.755,-**

Size 600 x 800 mm

**ORDER NO. 570832 - ONLY € 2.229,-**

### RUBBER ADAPTER MAT

Milling up to 2 mm deep into the adapter mat are not a problem.

Size 300 x 200 mm

**ORDER NO. 566131 - ONLY € 3,50**

Size 300 x 400 mm

**ORDER NO. 566132 - ONLY € 6,00**

Size 400 x 400 mm

**ORDER NO. 566133 - ONLY € 8,50**

Size 400 x 600 mm

**ORDER NO. 566134 - ONLY € 12,00**

Size 600 x 800 mm

**ORDER NO. 570833 - ONLY € 23,50**

Until now € 8,45  
**NOW ONLY € 3,50**



Until now € 2.460,-  
**NOW ONLY € 2.040,-**



### GRIPPER, PNEUMATIC

Fully automatic workpiece change during the machining process on a machine tool. It is actuated by means of compressed air, which is routed through the machine spindle.

Gripper expansion 80 mm

**ORDER NO. 570865 - ONLY € 2.040,-**

Gripper expansion 100 mm

**ORDER NO. 570866 - ONLY € 2.040,-**

Until now € 3.070,-  
**NOW ONLY € 2.545,-**



### GRIPPER, PNEUMATIC WITH COUNTERBALANCE ELEMENT

Fully automatic workpiece change during the machining process on a machine tool. It is actuated by means of compressed air, which is routed through the machine spindle.

Gripper expansion 80 mm

**ORDER NO. 570867 - ONLY € 2.545,-**

Gripper expansion 100 mm

**ORDER NO. 570868 - ONLY € 2.545,-**

Until now € 115,-  
**NOW ONLY € 96,-**



### GRIPPER INSERTS FOR GRIPPER

For quick and safe parts handling in the machine tool using the AMF gripper. The gripper inserts are mounted to the gripper carrier and mechanically secured.

Prism

**ORDER NO. 570881 - ONLY € 415,-**

Universal

**ORDER NO. 570882 - ONLY € 520,-**

Finger

**ORDER NO. 570883 - ONLY € 96,-**

Steel blank

**ORDER NO. 570884 - ONLY € 155,-**

Aluminium blank

**ORDER NO. 570885 - ONLY € 125,-**

Until now € 2.460,-  
**NOW ONLY € 2.040,-**



#### GRIPPER, HYDRAULIC

Fully automatic workpiece change during the machining process on a machine tool. It is actuated by means of compressed air, which is routed through the machine spindle.

Gripper expansion 80 mm,

Operating pressure min. 25 bar / max. 30 bar

**ORDER NO. 570869 - ONLY € 2.040,-**

Gripper expansion 80 mm

Operating pressure min. 35 bar / max. 40 bar

**ORDER NO. 570870 - ONLY € 2.040,-**

Gripper expansion 80 mm

Operating pressure min. 45 bar / max. 50 bar

**ORDER NO. 570871 - ONLY € 2.040,-**

Gripper expansion 100 mm

Operating pressure min. 25 bar / max. 30 bar

**ORDER NO. 570872 - ONLY € 2.040,-**

Gripper expansion 100 mm

Operating pressure min. 35 bar / max. 40 bar

**ORDER NO. 570873 - ONLY € 2.040,-**

Gripper expansion 100 mm

Operating pressure min. 45 bar / max. 50 bar

**ORDER NO. 570874 - ONLY € 2.040,-**

Until now € 3.070,-  
**NOW ONLY € 2.545,-**



#### GRIPPER, HYDRAULIC

#### WITH COUNTERBALANCE ELEMENT

Fully automatic workpiece change during the machining process on a machine tool. It is actuated by means of compressed air, which is routed through the machine spindle.

Gripper expansion 80 mm,

Operating pressure min. 25 bar / max. 30 bar

**ORDER NO. 570875 - ONLY € 2.545,-**

Gripper expansion 80 mm

Operating pressure min. 35 bar / max. 40 bar

**ORDER NO. 570876 - ONLY € 2.545,-**

Gripper expansion 80 mm

Operating pressure min. 45 bar / max. 50 bar

**ORDER NO. 570877 - ONLY € 2.545,-**

Gripper expansion 100 mm

Operating pressure min. 25 bar / max. 30 bar

**ORDER NO. 570878 - ONLY € 2.545,-**

Gripper expansion 100 mm

Operating pressure min. 35 bar / max. 40 bar

**ORDER NO. 570879 - ONLY € 2.545,-**

Gripper expansion 100 mm

Operating pressure min. 45 bar / max. 50 bar

**ORDER NO. 570880 - ONLY € 2.545,-**

**DISCOUNT OFFER 5%**

# **INCREASE THE PRODUCTIVITY OF YOUR TOOL MACHINE SIGNIFICANTLY -** WITH THE FLEXIBLE ROBOT LOADING SYSTEM FOR AUTOMATED WORKPIECE HANDLING

Market conditions in the machining sector have changed significantly in recent years. Nowadays, customers do not only expect high-quality yet cost-effective products, but also shorter delivery times, flexible batch sizes and customised solutions. This requires a high level of adaptability and flexibility from companies. At the same time, companies are facing increased wage costs and a shortage of qualified CNC operators and skilled workers in the machining sector.



## **THE SOLUTION FOR AN EFFICIENT AND ECONOMICAL MANUFACTURING PROCESS**

With **SMART AUTOMATION**, we offer a practical solution for automated workpiece handling on lathes and milling machines. The Automation can be operated without having programming knowledge. The changeover of production orders is carried out quick and flexibly, and the possibility of unmanned production during the night or at weekends becomes a reality.

With **SMART AUTOMATION**, you can significantly increase the productivity of your machine tool, while your skilled personnel are relieved of repetitive tasks so that you can utilise them more effectively.

## YOUR BENEFITS AT A GLANCE

- User-friendly operating concept with special knowledge of robots
- Compatible with new and existing machines
- Highly, flexibly expandable workpiece capacity
- Set-up parallel to production
- Space-saving due to the smallest footprint on the market
- Supplementing clamping equipment and fixture design available from AMF

# THOUGHT THROUGH IN DETAIL - MAXIMUM EFFICIENCY IN THE SMALLEST SPACE

**PROVEN IN PRACTICE  
WITH THE HIGHEST  
EFFICIENCY**

### BASIC CELL

Smallest footprint on the market.  
Effortless movement using a pallet truck.

### USER INTERFACE

Touch screen with intuitive menu guidance.  
No robot knowledge is required for operation.

### FLOOR SCANNER

As a space-saving alternative to an enclosure, it ensures the safety of your employees.  
The robot is slowed down or stopped.

### WORKPIECE TROLLEY

For external parallel loading during productive cycles.

### ROBOT

KUKA 6-axis robot with a load-bearing capacity of 10 kg

### GRIPPER

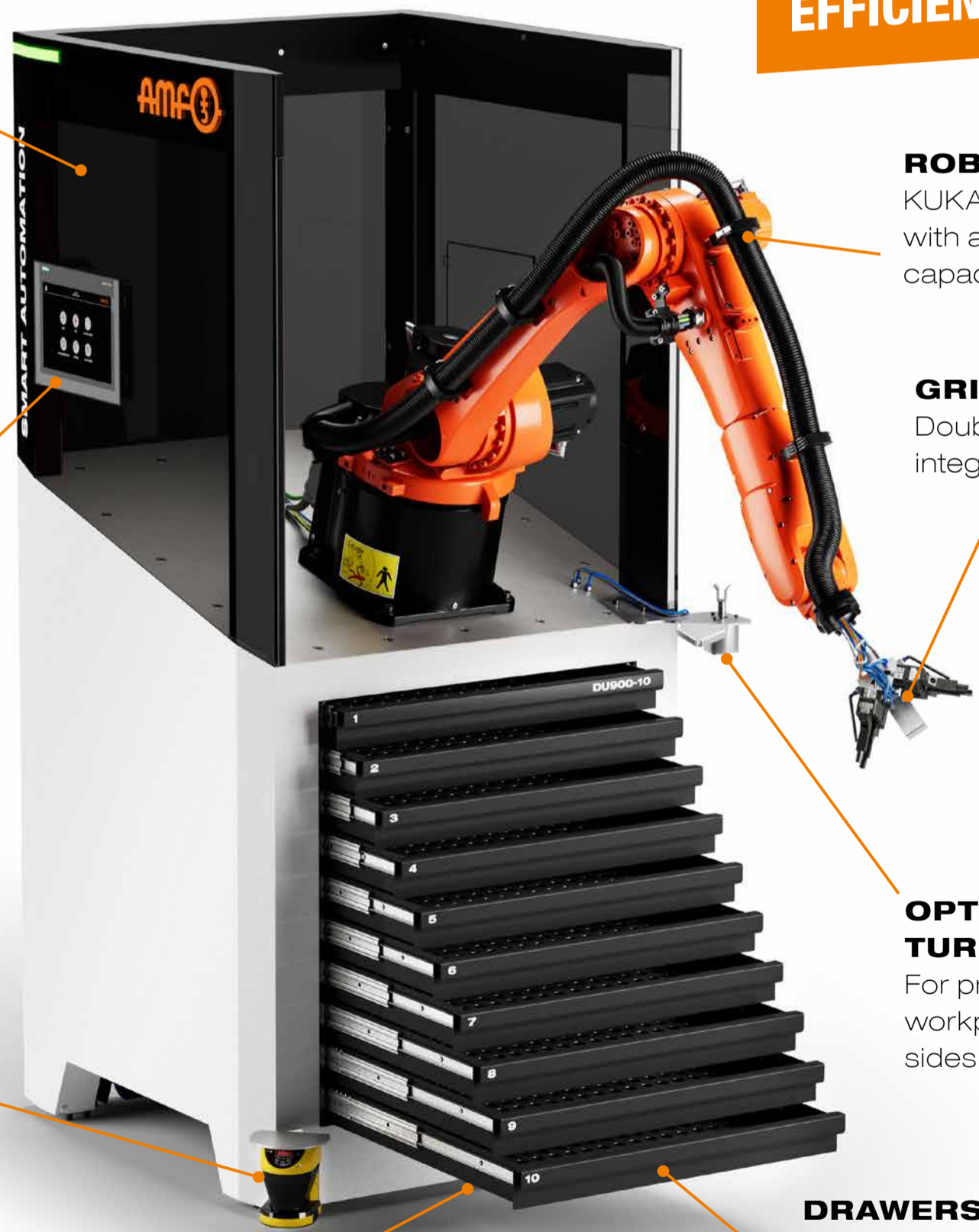
Double gripper with integrated blow-out

### OPTIONAL TURNING UNIT

For processing the workpiece from all sides.

### DRAWERS WITH GRID PLATES

Available for different part geometries or adaptable to individual needs



## THRILLED CUSTOMERS SPEAK FOR THEMSELVES!

A premium automotive supplier in southern Germany produces many variants of an important connection part in e-mobility. Linear machines from Otto Bihler Maschinenfabrik ensure for an economical production. The vertical machine tables are equipped with AMF zero-point clamping modules so that the frequent tool changes of the multi-variant series can be carried out quickly and reliably. In this way, the numerous modular linear tools can be set up in a time-saving and economical manner using the „Plug & Produce“ principle.

### THE CLAMPING MODULES ARE SMALL AND ROBUST

Five mounting stations in the machine table define the interface for the tools. Each receptacle is equipped with four KP5.3 zero-point clamping modules. They are pneumatically controlled with a pressure of five to a maximum of twelve bar. The base plates of the tool modules are equipped with four matching clamping pins. When the operator inserts the tool, these clamping pins are each retracted with 1.5 kN and held in place with 13 kN. This occurs very quick and the next order can start. In this way, even smaller batch sizes can be produced cost-efficiently. Control functions for interlocking, opening and support ensure the correct seating of the tool. These processes run reliably and safely with a repetition accuracy of less than 0.005 millimetres. Optionally, four more clamping modules of the SP150 models are installed. These can be used to fix centre punches for ejecting the parts.



### TODAY, CHANGES ONLY TAKE ONE TO TWO HOURS

In the past, it all took much, much longer. In the early years, a tool change could take up to two days. And even later, the technicians had to unscrew the special tools in long-winded processes, attach new ones and set them up. Even with modern machines, several hours or even a whole shift of production time were lost. It was only with the modular tools and the equipment of the machines with AMF zero-point clamping technology that productivity was given a huge boost. Since then, tool changes are usually completed within one to two hours.

The reliable AMF built-in clamping modules play their part. The cover and piston are hardened and thus particularly robust. Practically nothing breaks at all. Because the modules are very compact, they can also be easily screwed flush into the machine table. „The fact that the technology inside the small power packs is not entirely trivial has been experienced by some users who wanted to replicate the modules themselves. And in this way, the Swabian automotive supplier is thrilled that thanks to the AMF zero-point clamping technology, it can manufacture the 18 different variants of the busbars quickly and automatically with the highly productive linear machines, as well as with process reliability, repetition accuracy and, above all, economically.

